

Saccadic eye movements evoked by optogenetic activation of primate V1

Mehrdad Jazayeri^{1,2}, Zachary Lindbloom-Brown² & Gregory D Horwitz²

Optogenetics has advanced our understanding of the neural basis of simple behaviors in rodents and small animals. In primates, however, for which more sophisticated behavioral assays exist, optogenetic manipulations of behavior have been unsuccessful. We found that monkeys reliably shifted their gaze toward the receptive field of optically driven channelrhodopsin-2-expressing neurons of the primary visual cortex. This result establishes optogenetics as a viable tool for the causal analysis of behavior in primate brain.

An optogenetic approach for controlling the behavior of an experimental animal was recently pioneered¹. Channelrhodopsin-2 (ChR2) was expressed in the vibrissal motor cortex of the mouse and activation of ChR2 by blue light evoked whisker deflections. Since then, this approach has found numerous applications in the study of the neural circuitry underlying simple behaviors in rodents and lower animals^{2,3}. These successes bode well for the use of optogenetics in the analysis of more complex behaviors, cognition and their disorders⁴. A key step toward this goal is to adapt this technology to nonhuman primates, both as a tool for analyzing neural function in more sophisticated models of behavior and as a stepping stone toward clinical applications. Light-sensitive proteins have been used to influence neural activity in the primate brain^{5–7}, and ChR2-mediated activity has been shown to reduce saccade latency⁸. We used, to the best of our knowledge for the first time, optogenetics to evoke a behavioral response in the rhesus monkey (*Macaca mulatta*).

We expressed ChR2 in a small region of the primary visual cortex (V1) of two monkeys and asked whether ChR2-mediated neuronal activation produced a visual sensation at the location of the neurons' receptive fields. The *ChR2* gene was delivered with an AAV vector (*rAAV1-SYN1-ChR2(H134R)-mCherry*), which was pressure injected at multiple depths, ~300 μm apart, spanning the thickness of the cortex. We placed an optical fiber just above the dura mater near the site of injection 5–7 weeks later and shined pulses of blue light to stimulate V1 neurons. This optical stimulation (as opposed to visual stimulation, which would be through the eyes) reliably modulated single- and multiunit activity. The effectiveness of optical stimulation was specific to the site of injection (data not shown).

An important question is whether ChR2-mediated activation of V1 neurons is sufficient to engage visuomotor behavior. To answer this

question, we used a behavioral procedure⁹ that exploits monkeys' natural tendency to orient toward flashed stimuli. The task consisted of two randomly interleaved trial types, Fix and Tar. On Fix trials, monkeys fixated a central fixation point for 500–1,000 ms and received liquid reward immediately after the fixation point was extinguished (**Fig. 1a**). Unbeknownst to the monkeys, on a random half of the Fix trials, we applied optical stimulation 130 ms after the disappearance of the fixation point (Fix + Op; **Fig. 1b**). In both Fix and Fix + Op trials, monkeys received a reward for maintaining fixation, but not for their oculomotor behavior after the disappearance of the fixation point (**Fig. 1a,b**). On Tar trials, monkeys received a reward for making a saccade to a visual target that appeared 100 ms after the fixation point was extinguished (**Supplementary Fig. 1**). The optical stimulation was also applied in a random half of the Tar trials (Tar + Op).

We hypothesized that the optical stimulation would bias saccades toward the receptive field of the optically stimulated neurons. To test this hypothesis, we compared saccade endpoints after the disappearance of the fixation point in different conditions. On the Fix trials, the disappearance of the fixation point was followed by spontaneous saccades with variable directions and amplitudes (**Fig. 1a**). In the Fix + Op condition, saccade endpoints were indeed biased toward the receptive field (**Fig. 1b**). To quantify this observation, we compared the Euclidean distance of the saccade endpoints to the center of the receptive field between the Fix and Fix + Op trials. We made this measurement in 35 distinct experimental sessions that differed in the position of the electrode, optical fiber or both. The magnitude of this optical stimulation effect varied with laser power (**Supplementary Fig. 2**) and was significant in 21 of 35 experiments (16 of 26 in one monkey, and 5 of 9 in the other, Mann-Whitney tests, $P < 0.05$; **Fig. 1c**). Overall, the distance of the saccade endpoints to the center of the receptive field was significantly smaller when optical stimulation was applied than when it was not (Mann-Whitney test; monkey 1, $P < 10^{-10}$; monkey 2, $P < 10^{-10}$). In the Tar and Tar + Op trials, nearly all of the saccades were directed toward the visual target, which was presented in the receptive field of the ChR2-expressing neurons (**Supplementary Fig. 1**).

We also compared saccade latencies across conditions (**Supplementary Fig. 3**). The median latency of the first saccade after the disappearance of the fixation point was 0.29, 0.24 and 0.26 s in the Fix + Op, Tar and Tar + Op conditions, respectively. Saccade latency in the Fix + Op and Tar + Op conditions was significantly longer than those in the Tar condition (Mann-Whitney test; Tar versus Tar + Op, $P < 10^{-10}$; Tar versus Fix + Op, $P < 10^{-4}$).

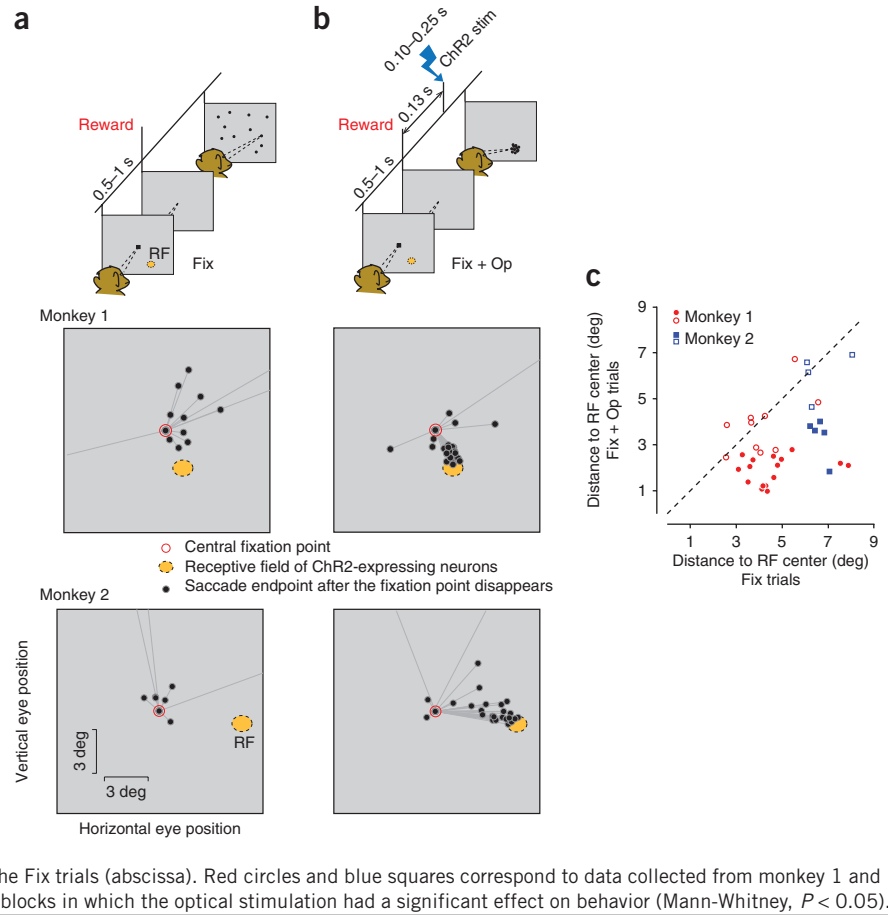
The retinotopic specificity of saccades in the Fix + Op condition suggests that optical stimulation evoked a spatially localized visual sensation. However, it is also possible that this spatial specificity was established indirectly in the course of Tar + Op trials, in which visually guided saccades toward the receptive field of the optically stimulated neurons were rewarded. In other words, the repeated pairing of optical stimulation and the reward given for receptive field-directed saccades

¹Howard Hughes Medical Institute, University of Washington, Seattle, Washington, USA. ²Washington National Primate Research Center, Department of Physiology and Biophysics, University of Washington, Seattle, Washington, USA. Correspondence should be addressed to M.J. (mjaz@u.washington.edu).

Received 11 June; accepted 8 August; published online 2 September 2012; doi:10.1038/nn.3210

Figure 1 Task description and distributions of saccade endpoints in Fix trials.

(a,b) Schematics show task events for trials without (Fix, a) and with (Fix + Op, b) optical stimulation. On both Fix and Fix + Op trials, monkeys were required to maintain fixation for 0.5–1 s on a central fixation point (black square) and received liquid reward immediately after the fixation point disappeared. On Fix + Op trials, the disappearance of the fixation point was followed by optical stimulation, which consisted of light pulses lasting 0.10–0.25 s. Black circles in the topmost panel of the schematic diagrams represent the endpoints of spontaneous saccades made after the disappearance of the fixation point. Middle and bottom panels show post-fixation spontaneous saccades in example experimental sessions. In the Fix condition, saccade endpoints (black circles) were broadly distributed, whereas, in the Fix + Op condition, they were concentrated near the receptive field (RF) of the stimulated neurons (orange), even though no visual target was presented. In these sessions, the laser intensity was set to 50 mW for monkey 1 and 20 mW for monkey 2. (c) Comparison of saccade endpoints in trials with and without optical stimulation. For each experiment, we measured the distance of each saccade endpoint to the center of the receptive field of the optically stimulated neurons and computed a mean distance for the Fix and Fix + Op trials in each block. In most experiments, saccades in Fix + Op trials (ordinate) landed closer to the receptive field center than saccades in the Fix trials (abscissa). Red circles and blue squares correspond to data collected from monkey 1 and monkey 2, respectively. Filled symbols correspond to blocks in which the optical stimulation had a significant effect on behavior (Mann-Whitney, $P < 0.05$).



in the Tar + Op condition could have conferred retinotopic specificity on an otherwise nonspecific stimulation effect. Under this alternative explanation, the location of the saccade endpoints in the Fix + Op trials is determined by the location of the visual target and not by the receptive field of the Chr2-expressing neurons. To test this possibility, we examined saccade endpoints in blocks of trials in which the saccade target was presented in the hemifield opposite to the receptive field of the Chr2-expressing neurons (Supplementary Fig. 4). In these blocks of trials, eye movements toward the receptive field of the Chr2-expressing neurons were never rewarded. Nevertheless, the monkeys continued to make saccades into the receptive field of the optically stimulated neurons, indicating that Chr2-mediated activity produced a localized visual sensation near the receptive field of the stimulated neurons.

We also compared the pattern of activity evoked by optogenetic and visual stimulation of V1 neurons. As expected, V1 activity was unmodulated in the absence of visual or optical stimulation (Fig. 2a)

and usually increased in response to a visual target in the receptive field (Fig. 2b). In contrast, Chr2-mediated activity was inconsistent between recording sites (Fig. 2c). At some sites, optical stimulation produced sustained excitation, as would be expected given the biophysical properties of Chr2 (Fig. 2c). At other sites, the effect was either suppression (Fig. 2c) or excitation followed by sustained suppression. On average, there was no significant correlation between visually evoked and optically induced activity across recording sites (Pearson correlation, $P > 0.25$).

In light of the dissociation between patterns of activity evoked by the optical and visual stimulation, we asked which of the two was more effective at driving responses in the Tar + Op trials, in which both types of stimuli were delivered. In the Tar + Op condition, responses were invariably dominated by the activity associated with optical stimulation (Fig. 2d). To quantify this effect across recording sites, we constructed a model in which the firing rates in Tar + Op

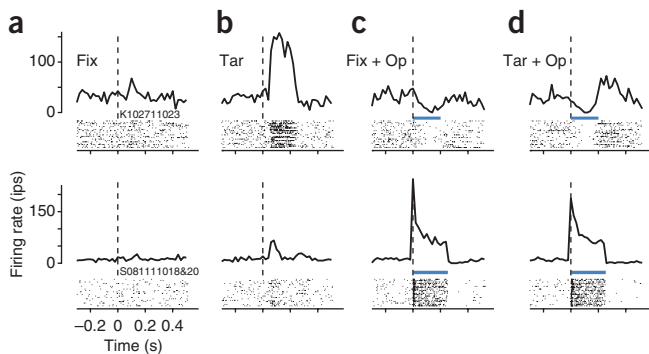


Figure 2 V1 activity associated with the four experimental conditions. Each row corresponds to multiunit activity recorded at a different V1 site. In each panel, the raster plot shows spiking times (black ticks) of individual trials (rows) and the peri-stimulus time histogram (PSTH) shows the average firing rates (bin width = 20 ms). (a) Spikes times and the corresponding PSTHs for the Fix conditions were aligned to the time when the fixation point disappeared. (b) In the Tar condition, spikes were aligned to the time of the onset of the visual target. (c,d) In the Fix + Op (c) and Tar + Op (d) conditions, trials were aligned to the onset of optical stimulation (laser power, 50 mW). The top and bottom rows show PSTHs at recording sites approximately 450 and 525 μ m from the cortical surface, respectively. At both sites, Tar + Op responses (d) were more similar to Fix + Op responses (c) than to Tar responses (b). The blue bars indicate the duration of optical stimulation.



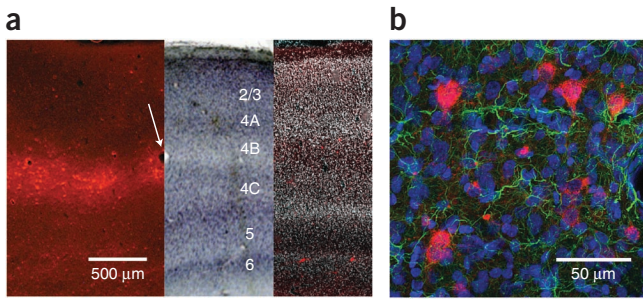


Figure 3 Histological analysis of ChR2 expression in V1. **(a)** Montage of three coronal sections near the injection site. The left section was unstained and was imaged for red fluorescence (ChR2-mCherry), the middle section was stained with cresyl violet and imaged under bright field, and the right section was stained with DAPI and imaged for red and blue fluorescence (DAPI has been rendered white). The unstained and cresyl violet-stained sections, which were 50 μm apart, were aligned digitally on the basis of blood vessels (for example, white arrow). The DAPI-stained section, which was approximately 1 mm from the injection site, had fewer transduced cells (scattered red spots). **(b)** Fluorescence image of a coronal section of V1 near the site of injection showing ChR2-expressing cells (red) along with DAPI (blue) and GFAP staining (green). Because GFAP is expressed in glial cells, the absence of GFAP staining in ChR2-expressing cells suggests that the transduced cells were not glial.

trials ($R_{\text{Tar+Op}}$) were modeled as a linear sum of the firing rates in the Fix + Op ($R_{\text{Fix+Op}}$) and Tar (R_{Tar}) conditions with regression coefficients β_1 and β_2 , respectively, plus an independent constant term, β_3 .

$$R_{\text{Tar+Op}} = \beta_1 R_{\text{Fix+Op}} + \beta_2 R_{\text{Tar}} + \beta_3$$

The model, which predicted responses in the Tar + Op condition well ($r^2 = 0.96$, $P < 0.001$), suggested that the combined effect of optical stimulation and visual target presentation on firing rates was better predicted by the effect of optical stimulation alone ($\beta_1 = 1.02$, 95% confidence interval = [0.74 1.30]; $\beta_2 = -0.19$, 95% confidence interval = [-4.14 3.76]).

At the end of the experiments, we used standard histological techniques to examine the pattern of ChR2 expression. Transduced cells were distributed densely in a band nearly 1 mm from the pial surface (Fig. 3a). The pattern of ChR2 expression fell off with distance from the injection site (radius ~ 2 mm), but no ChR2-positive cells were observed at the injection site, presumably as a result of tissue damage from the injection procedure. Confocal fluorescence imaging of the sections revealed that the transduced cells were neuronal with non-pyramidal morphology (Fig. 3b).

Notably, ChR2 expression was layer specific. Using cresyl violet and DAPI staining (Fig. 3a), we estimated that cell bodies with strong ChR2 expression were in layer 4B. We also found scattered ChR2-expressing neurons in layers 5 and 6, and rare expression in other layers. This expression pattern is not straightforwardly explained by the injection protocol, as the viral vector was injected uniformly throughout the cortical depth. The observed laminar specificity might be a result of a characteristic tropism of the AAV1 vector that we used in macaque V1.

What factors contributed to the successful manipulation of primate behavior using a technique that has been unsuccessful previously? One key factor may be that we activated a sensory cortical area, whereas previous attempts to manipulate behavior targeted motor structures. It may seem paradoxical that manipulations of sensory signals could be more effective in driving behavior than those targeted directly at motor structures, but there are three reasons why optically induced neural signals could be more effective in sensory areas. First, signals

initiated in sensory cortex undergo a complex series of processing stages, providing ample opportunity for amplifying weak signals so that they can become manifest in behavior¹⁰. In contrast, weak signals initiated in motor areas might not have the opportunity to be sufficiently amplified. Indeed, the effectiveness of near-threshold signals in both sensory and motor areas in driving behavior is thought to depend on further cortical processing^{11,12}. Second, we found that optical stimulation activated some V1 neurons while suppressing others. Because ChR2 conducts a depolarizing current, this bidirectional effect probably reflects the combined influence of both excitatory and inhibitory ChR2-expressing neurons on local V1 networks (consistent with pan-neuronal expression from the *SYN1* promoter⁶). In V1, such an unfamiliar pattern of activation may nonetheless induce a phosphene percept, draw attention and engage visuomotor circuits that lead to an orienting behavior. In motor structures, on the other hand, only suitably structured patterns of activity might be able to drive the muscles¹³. More generally, this observation highlights the need for more sophisticated stimulation techniques that better emulate native patterns of activity during normal function. Third, we observed the highest ChR2 expression in layers 4B, 5 and 6, layers that target dorsal stream and subcortical structures that are known to be involved in orienting behaviors. We confirmed dense ChR2-positive axonal projections to the superficial layers of the superior colliculus histologically (data not shown). These direct projections are unlikely to mediate the saccades that we studied, however, saccade latencies in our task were too long⁹. A more parsimonious explanation of the monkeys' behavior is that optogenetic activation of V1 causes a localized visual sensation, or phosphene, that engages the oculomotor system.

METHODS

Methods and any associated references are available in the online version of the paper.

Note: Supplementary information is available in the online version of the paper.

ACKNOWLEDGMENTS

We would like to thank K. Deisseroth and M. Shadlen for sharing resources, F. Robinson, J. Garlid, E. Grover, J. Huang, D. Possin and L. Tait for technical assistance, and C. Fetch and C. Hass for help with the experiments. This work was supported by The McKnight Foundation and research grants EY001730, EY018849 and RR000166 from the US National Institutes of Health.

AUTHOR CONTRIBUTIONS

M.J., Z.L.-B. and G.D.H. conducted the experiments and analyzed the data. M.J. and G.D.H. wrote the manuscript.

COMPETING FINANCIAL INTERESTS

The authors declare no competing financial interests.

Published online at <http://www.nature.com/doi/10.1038/nn.3210>.

Reprints and permissions information is available online at <http://www.nature.com/reprints/index.html>.

- Aravanis, A.M. *et al.* *J. Neural Eng.* **4**, S143–S156 (2007).
- Bernstein, J.G. & Boyden, E.S. *Trends Cogn. Sci.* **15**, 592–600 (2011).
- Gradinaru, V. *et al.* *J. Neurosci.* **27**, 14231–14238 (2007).
- Fenko, L., Yizhar, O. & Deisseroth, K. *Annu. Rev. Neurosci.* **34**, 389–412 (2011).
- Han, X. *et al.* *Neuron* **62**, 191–198 (2009).
- Diester, I. *et al.* *Nat. Neurosci.* **14**, 387–397 (2011).
- Han, X. *et al.* *Front. Syst. Neurosci.* **5**, 18 (2011).
- Gerits, A. *et al.* *Curr. Biol.* published online, doi:10.1016/j.cub.2012.07.023 (24 July 2012).
- Tehovnik, E.J., Slocum, W.M. & Schiller, P.H. *Eur. J. Neurosci.* **17**, 870–878 (2003).
- Britten, K.H., Newsome, W.T., Shadlen, M.N., Celebri, S. & Movshon, J.A. *Vis. Neurosci.* **13**, 87–100 (1996).
- Shadlen, M.N. & Newsome, W.T. *Proc. Natl. Acad. Sci. USA* **93**, 628–633 (1996).
- Schäfer, R.J. & Moore, T. *Science* **332**, 1568–1571 (2011).
- Churchland, M.M. & Shenoy, K.V. *J. Neurophysiol.* **97**, 4235–4257 (2007).

ONLINE METHODS

Two female rhesus monkeys (7.2 and 8.3 kg, *Macaca mulatta*) participated in these experiments. Behavioral protocols, animal care and surgical procedures were all in accordance with the US National Institutes of Health *Guide for the Care and Use of Laboratory Animals* and were approved by the University of Washington Animal Care Committee.

Monkeys were surgically implanted with a titanium head-holding device and recording chamber. We characterized a target V1 site using standard electrophysiological techniques and pressure injected 10–12 μ l of the viral vector containing the *ChR2* gene (*rAAV1-SYN1-ChR2(H134R)-mCherry*) over the course of 4–5 h into that site using a cannula with a \sim 150- μ m inner diameter. The viral vector was made via the helper-free triple-transfection procedure, dialyzed in phosphate-buffered saline and titered at 5.5×10^{11} particles per ml.

During experiments, monkeys were seated in primate chairs with their heads fixed, and they viewed stimuli on a computer monitor (background luminance = 90 cd m^{-2}) binocularly from a distance of 100 cm. The behavioral task consisted of two randomly interleaved trial types. On Fix trials, the monkey fixated a black square (side = 0.2°, luminance > 2 cd m^{-2}) for 500–1,000 ms and received a juice reward when the fixation point was extinguished. On Tar trials, a peripheral square target (side = 0.2–0.4° side, luminance = 49 cd m^{-2}) was displayed 100 ms after the fixation point was extinguished, and the monkey was rewarded for making a saccade to the target within 300 ms of target onset. Trials were aborted without reward if the eye position deviated >1° from the fixation point before fixation point disappearance. In the Tar condition, reward was delivered only if the saccade landed within 1.8° of the target.

We recorded neural activity using tungsten electrodes and measured eye position with scleral search coils. Digitized gaze position signals, extracellular neural activity and other behavioral timing events were stored using a Plexon MAP system for offline analysis. Saccades were identified on the basis of velocity criteria.

The recording electrode and the optical fiber were placed inside a common guide tube above the dura mater and were advanced independently using a custom microdrive. First, the electrode was advanced until neural activity was detected. Afterwards, the optical fiber was advanced until light pulses (473 nm, \leq 50 mW) clearly modulated neural activity. Neural responses were not modulated if the tip of the optical fiber was far from the where electrical

activity was detected (>1 mm) or if both were located far (>2 mm) from the injection site. Data in **Figure 1** are from trials in which the optical fiber was advanced to its terminal point (that is, closest to the depth at which electrical activity was recorded).

In the main experiment, the saccade target was presented inside the receptive field of the neurons at the injection site, as measured from the multiunit activity. In the control experiment, the saccade target was presented in the opposite hemifield. Optical stimulation was applied to the site of injection on a random half of trials of each category. In Opt + Fix trials, the optical stimulation was applied 130 ms after the fixation point was extinguished. On Tar + Op trials, the stimulation was applied 30 ms after target onset. This timing, which was based on a previous study⁹, ensured that the ChR2 activation was roughly synchronous with the visually driven response in V1. The visual target was presented 100 ms after the disappearance of the fixation point, and an additional \sim 30 ms are required for the effect of the visual target to reach V1.

We verified the effectiveness of light pulses of various durations (100–250 ms) and various frequencies (0–200 Hz) in eliciting saccades in the Opt + Fix condition. To determine whether neural responses in the Tar + Op condition were predicted by responses to the target and optical stimulation alone, we used a linear regression model to relate the firing rates in the Tar + Op condition to the firing rates in the Fix + Op and Tar conditions. We measured average firing rates in the 30–130 ms after fixation point disappearance and minimized the squared error between the linear prediction and the data to fit the regression coefficients. We shifted the beginning and the end of the window from which firing rates were estimated independently by up to 30 ms (in 5-ms steps) and found that our estimates of the regression coefficients were robust with respect to these changes.

We performed histological analysis of the brain of one monkey to characterize the spread and efficacy of our viral expression system. The animal was killed with an overdose of pentobarbital and perfused transcardially with 4% paraformaldehyde (wt/vol). The brain was removed, cryoprotected in 30% sucrose (wt/vol) and 50- μ m-thick sections were cut on a sliding microtome. Standard procedures were performed for cresyl violet staining. We also immunostained for GFAP using rabbit antibody to GFAP (1:400, Z 334, DAKO) with secondary antibody (1:500 711-486-152, Jackson ImmunoResearch) conjugated to DyLight 488 dye. Afterward, sections were cover-slipped using FluoroGel mounting medium with DAPI.

Saccadic eye movements evoked by optogenetic activation of primate V1

Mehrdad Jazayeri^{1,2}, Zachary Lindbloom–Brown², and Gregory D. Horwitz²

¹Howard Hughes Medical Institute, ²National Primate Research Center, Department of Physiology and Biophysics, University of Washington, Seattle, Washington, USA.

Correspondence:

Mehrdad Jazayeri
Department of Physiology and Biophysics
University of Washington
Box 357290
Seattle, WA 98195
Telephone: 206.616.3308
Fax: 206.543.1196
Email: mjaz@u.washington.edu

Fig. S1. Task description and distributions of saccade endpoints in Tar trials.

Fig. S2. Behavioral effect as a function of laser power

Fig. S3. Reaction time

Fig. S4. Control experiment

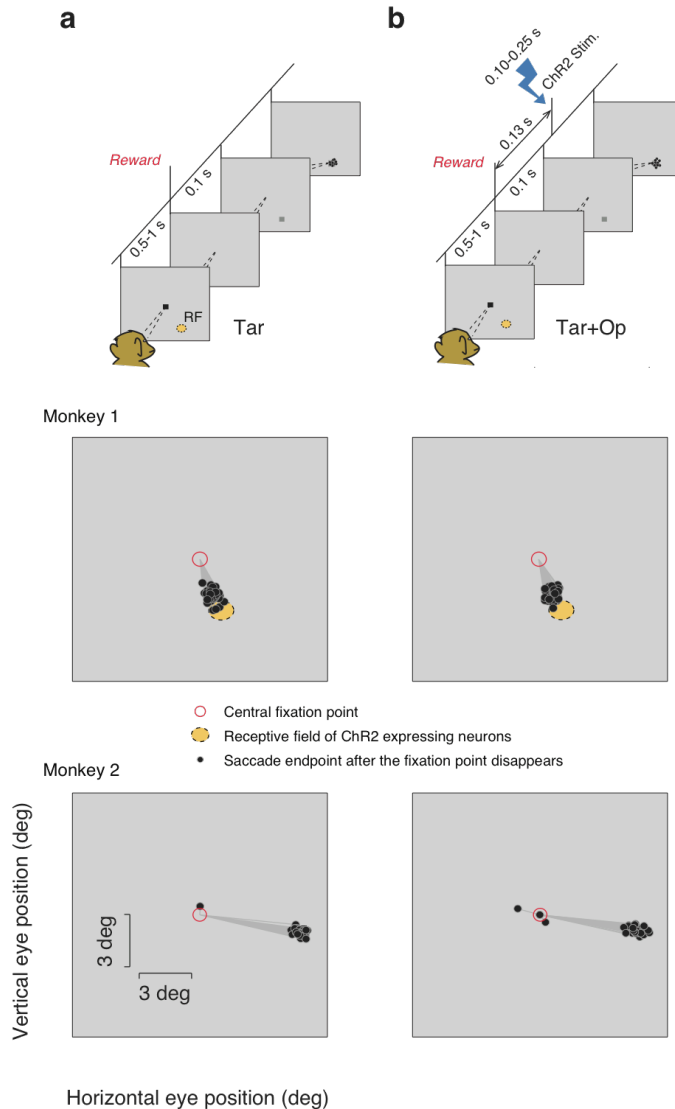


Figure S1. Task description and distributions of saccade endpoints in Tar trials. Schematics in (a) and (b) show task events for trials with and without optical stimulation ('Tar' and 'Tar+Op' respectively). For both Tar and Tar+Op trials, monkeys were required to maintain fixation for 0.5-1 sec on a central fixation point (FP, black square). After a fixed 0.1 sec after the disappearance of FP, a peripheral visual target (dark gray square) was presented. Monkeys had to make a saccade to the visual target within 0.3 sec after its onset to receive liquid reward. On Fix+Op trials (b), unbeknownst to the monkey, we applied optical stimulation 0.03 sec after the onset of the visual target (equivalent to 0.13 sec after the disappearance of FP). The optical stimulation consisted of light pulses that lasted a variable duration of 0.1 to 0.25 sec. The black circles on the topmost panel of (a) and (b) show depict the endpoints of saccades near the visual target, which was presented at the center of the receptive field (RF, orange) of ChR2-expressing neurons. The panels underneath the task schematics show the two monkeys' saccades toward the visual target in an example block of trials. In both trial types, the majority of saccades landed near the visual target.

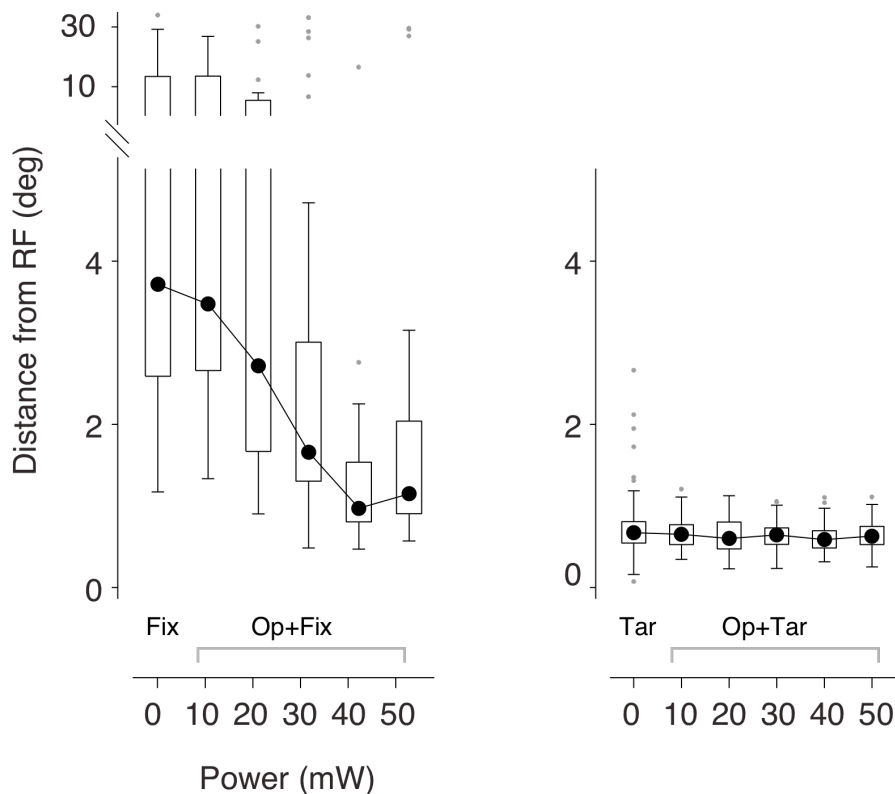


Figure S2. Behavioral effect as a function of laser power. On a subset of blocks, we varied the power of the laser in interleaved trials and quantified the magnitude of the behavioral effect by the average distance of saccade endpoints to the RF of stimulated neurons. **(a)** Box plot of this distance as a function of laser power across the Fix (leftmost column) and Fix+Op trials. As expected, the median distance of saccade endpoints to the RF reduces with laser power. **(b)** Results of the same analysis for the Tar and Tar+Op trials. In each box plot, the filled circle corresponds to the median, the surrounding box covers the range between 25 and 75 percentiles (Q1 and Q3, respectively), the whiskers extend from $Q1 - 1.5 \cdot (Q3 - Q1)$ at the bottom to $Q3 + 1.5 \cdot (Q3 - Q1)$ at the top, and the remaining “outliers” are plotted as small black dots.

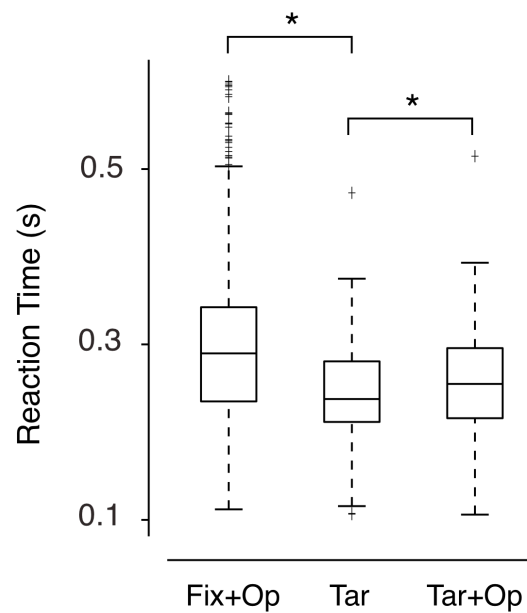


Figure S3. Reaction time. We quantified reaction time as the latency of the first saccade within a window of 0.1 to 0.6 sec after the disappearance of the fixation point. The box plot shows the statistics of the reaction times across the two monkeys for three trial types: Fix+Op, Tar and Tar+Op conditions. For the Fix+Op and Tar+Op conditions in which optical stimulation was applied, reaction times were significantly longer (Mann–Whitney; Tar versus Tar+Op: $p < 1e-10$; Tar versus Fix+Op: $p < 1e-4$). In each box plot, the horizontal line shows the median and plotting conventions are as in Fig. S2.

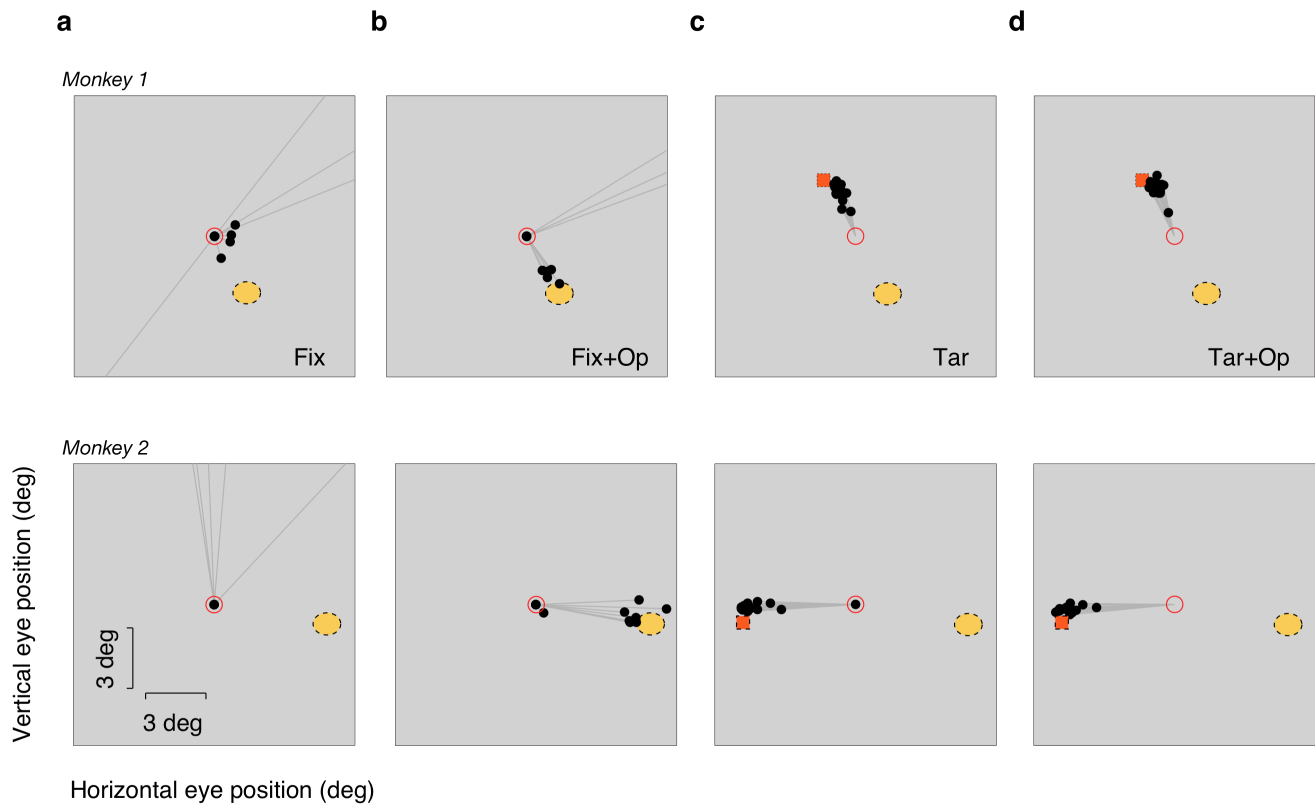


Figure S4. Control experiment. In the control experiment, the target (red square) was presented in the hemifield opposite the RF of the optically stimulated ChR2-expressing neurons. Panels (a) to (d) show endpoints (black dots) of saccades made after the disappearance of the fixation point (FP, red circle) in the four experimental conditions. (a) In the Fix condition, saccade endpoints (black dots) were broadly distributed. (b) In the Fix+Op condition, saccade endpoints were concentrated near the RF of the stimulated neurons (orange) even though no target was shown in these trials. (c) In the Tar condition, saccade endpoints were directed toward the visual target (red square), which was opposite the RF of the optically stimulated neurons. (d) In the Tar+Op condition, similar to the Tar condition, saccades were directed at the visual target. Results for the two monkeys appear in separate rows.